

Supreme Competitor Exam
Ages: 15 and Up

1. On average, sheep have how many fibers per square inch of skin:
 - a. Between 50-100
 - b. Between 500-1000
 - c. Between 5000-50000
 - d. Between 50000-110000
2. On average, the gestation length of a ewe is:
 - a. 114 days
 - b. 130 days
 - c. 148 days
 - d. 172 days
3. The grade of wool is determined by:
 - a. Fiber length
 - b. Fiber color
 - c. Fiber diameter
 - d. Fiber grease content
4. The female reproductive tract does not include the:
 - a. Vas deferens
 - b. Fallopian Tube
 - c. Ovary
 - d. Vagina
5. True or False: Estrus typically lasts less than 4 hours in a sheep.
 - a. True
 - b. False
6. The male reproductive tract does not include the:
 - a. Penis
 - b. Cervix
 - c. Scrotum
 - d. Epididymis
7. On average in sheep, estrus occurs every:
 - a. 12 days
 - b. 18 days
 - c. 21 days
 - d. 28 days
8. On average, how many pounds of live lamb does it take to produce 1 pound of retail cut?
 - a. 1 lb
 - b. 2 lbs
 - c. 3.3 lbs
 - d. 5.5 lbs
9. Sheep have how many pairs of chromosomes:
 - a. 15
 - b. 24
 - c. 27
 - d. 38
10. Unwashed wool, before scouring, is called:
 - a. Staple length
 - b. Trash
 - c. Dirty
 - d. Grease Wool
11. Wholesale cuts of meat include the:
 - a. Lamb steaks
 - b. Lamb chops
 - c. Lamb burgers
 - d. Leg of Lamb
12. The crown roast comes from the:
 - a. Rib
 - b. Loin
 - c. Rack
 - d. Shoulder
13. An example of a terminal sire breed is:
 - a. Cheviot
 - b. Southdown
 - c. Hampshire
 - d. Columbia
14. An animal's "flight zone" is:
 - a. How far it can fly
 - b. Minimum area for comfort and security
 - c. Area the animal sleeps in
 - d. How far the animal jumps when frightened
15. Scrotal circumference is measured in:
 - a. Inches
 - b. Millimeters
 - c. Feet
 - d. Centimeters
16. Dystocia is:
 - a. A small pelvic area
 - b. A difficult birth
 - c. Pregnancy toxemia
 - d. Sore mouth

Supreme Competitor Exam
Ages: 15 and Up

17. The period of time when a ewe has lambs nursing is known as:
- Gestation
 - Lactation
 - Ovulation
 - Hibernation
18. Prime, Choice and Good are examples of:
- Lamb yield grades
 - Lamb quality grades
 - Lamb indices
 - Slaughter grades
19. True or False: Mature rams may breed 30 to 50 head of ewes. Ram lambs (six to 12 months of age) may be used to breed 15 to 25 ewes in a season.
- True
 - False
20. At what age should most lambs be weaned:
- 10 – 30 days
 - 40 – 50 days
 - 60 – 80 days
 - 90 – 110 days
21. Sheep growing diets generally have what percentage of crude protein:
- 15% - 17%
 - 2% - 3%
 - 10% - 12 %
 - 18% - 20%
22. Tip, epidermis, cortex and medulla are all terms for what:
- Parts of the brain
 - Parts of wool fiber
 - Parts of the skin
 - Parts of the digestive system
23. During which phase of production should a ewe receive the most grain:
- Late gestation
 - Lactation
 - During estrus
 - Early gestation
24. True or False: Wool breeds are typically judged 60% for their confirmation.
- True
 - False
25. What are dung locks, floor sweepings, or stained pieces of wool called?
- Staple
 - Fleece
 - Crimp
 - Tags

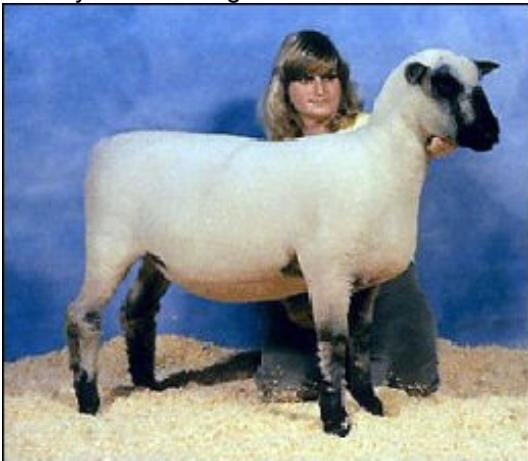
Supreme Competitor Exam
Ages: 15 and Up

26. Identify the following breed:



- a. Cheviot
- b. Columbia
- c. Hampshire
- d. Finnsheep

27. Identify the following breed:



- a. Romney
- b. Southdown
- c. Shropshire
- d. Hampshire

28. Identify the following breed:



- a. Dorset
- b. Dorper
- c. Hampshire
- d. Suffolk

29. Identify the following breed:



- a. North Country Cheviot
- b. Tunis
- c. Dorper
- d. Dorset

30. Identify the following breed:



- a. Columbia
- b. Oxford
- c. Hampshire
- d. Suffolk

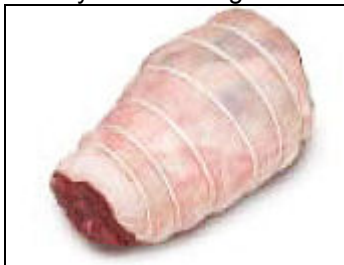
Supreme Competitor Exam
Ages: 15 and Up

31. Identify the following cut of meat:



- a. Loin Roast
- b. Rib Chops
- c. Loin Chops
- d. Shank

32. Identify the following cut of meat:



- a. Boneless Leg Roast
- b. Shank
- c. Rack
- d. Rib Chops

33. Identify the following cut of meat:



- a. Loin Roast
- b. Leg Roast
- c. Boneless Leg Roast
- d. Boneless Shoulder Roast

34. Identify the following cut of meat:



- a. Leg Roast
- b. Spareribs
- c. Shank
- d. Loin

35. Identify the following cut of meat:



- a. Spareribs
- b. Loin
- c. Shank
- d. Shoulder

Supreme Competitor Exam
Ages: 15 and Up

36. Identify part Z:
 a. Hind Saddle
 b. Hip
 c. Rump
 d. Loin

37. Identify part Y:
 a. Loin
 b. Leg
 c. Rack
 d. Dock

38. Identify part V:
 a. Loin
 b. Hind Saddle
 c. Rack
 d. Ribs

39. Identify part K:
 a. Elbow
 b. Point of Shoulder
 c. Hock
 d. Twist

40. Identify part J:
 a. Rump
 b. Flank
 c. Rack
 d. Loin

Use the image below to answer questions 36-40

